

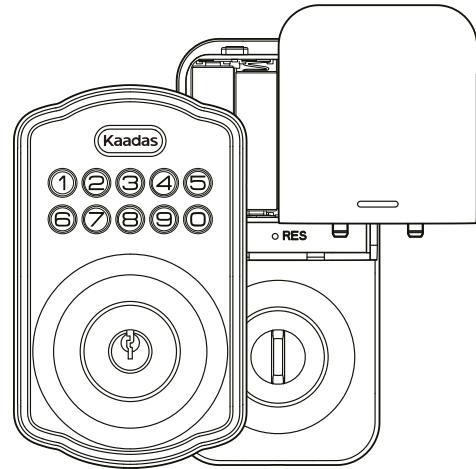
148.5mm

105mm

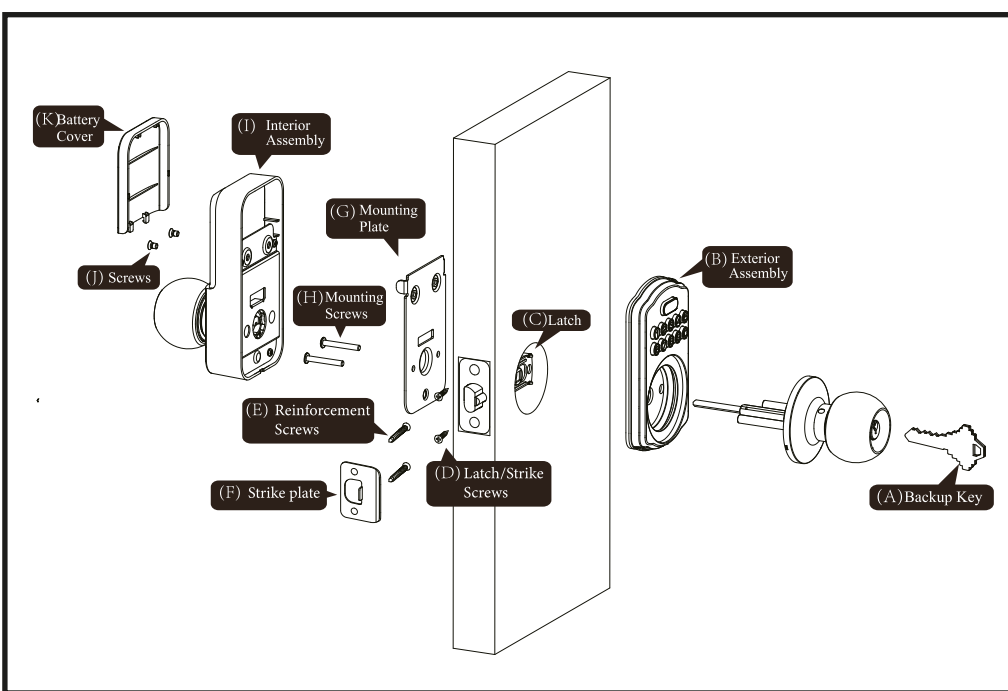
Kaadas
Access to your Future !

KS03
User Manual

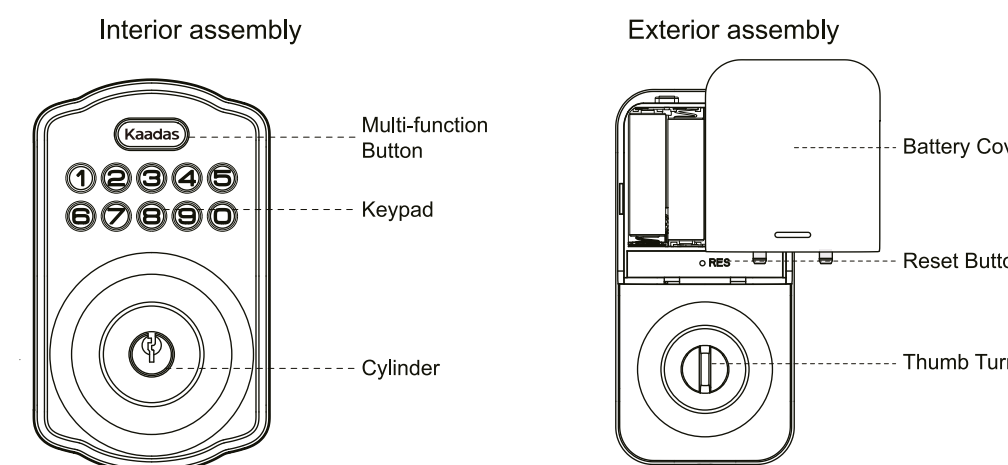
www.kaadastgroup.com
Shenzhen Kaadas Intelligent Technology Co., Ltd reserves all rights for the final interpretation to this user manual
All design and specifications are subject to change without notice.



Installation Guide

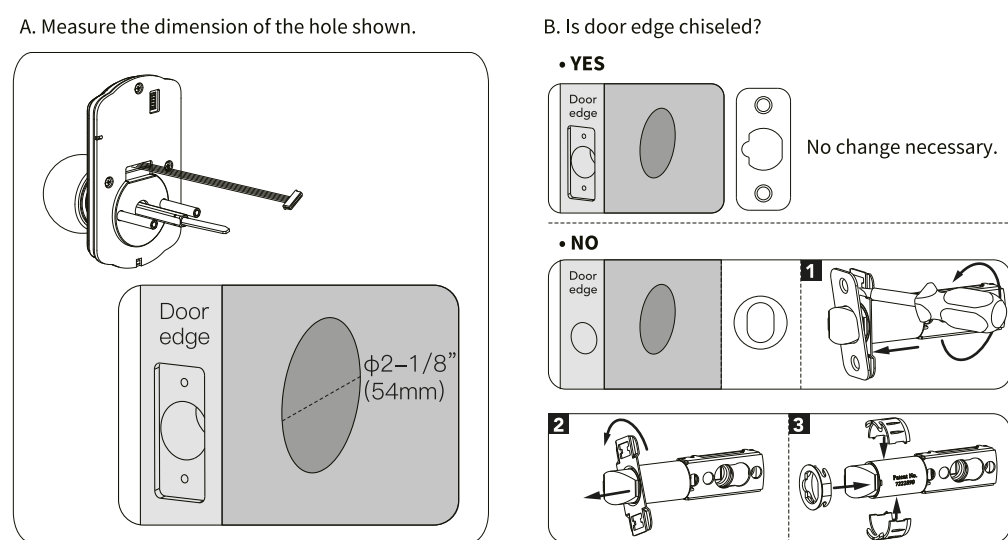


Additional Parts	Tool Needed	Lock Installation #2 Philips screwdriver
Optional bolt faceplate	Door prep 1. 2-1/8" (54mm) hole saw 2. 1/16" (26mm) boring bit 3. 7/64" (2.5mm) drill bit 4. Chisel & Hammer	Important notice: Make sure your door is prepared prior to installation. Please refer to the provided template for drilling if needed.



We reserve all rights for the interpretation to this instruction.
▲ All design and specification are subject to change without notice.

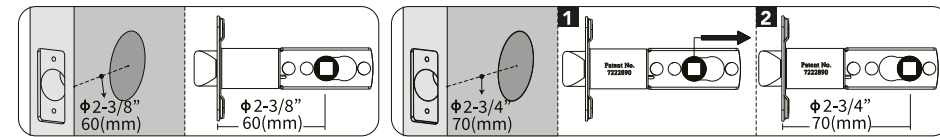
Preparing for Installation



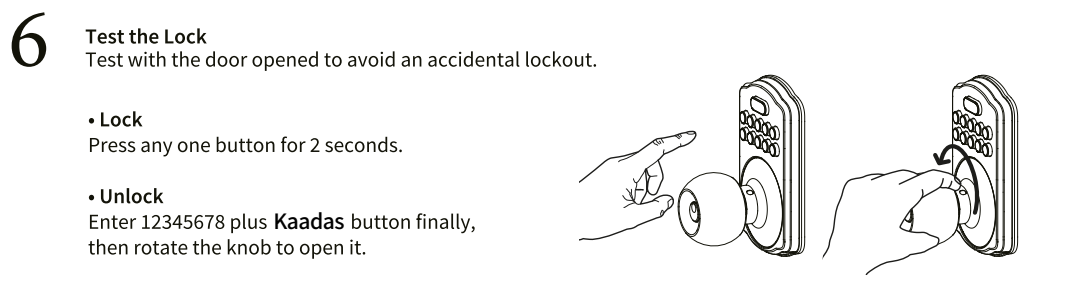
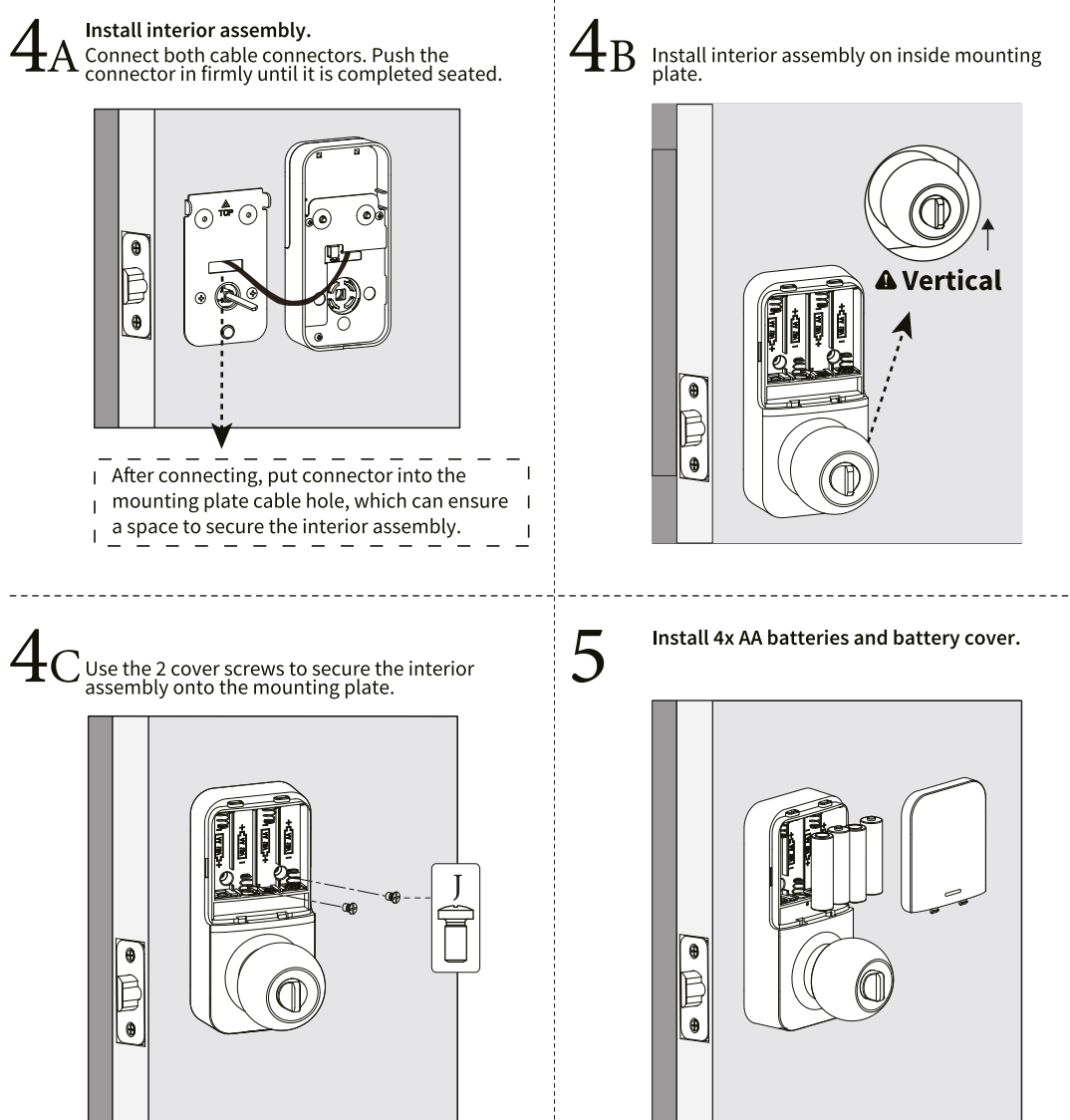
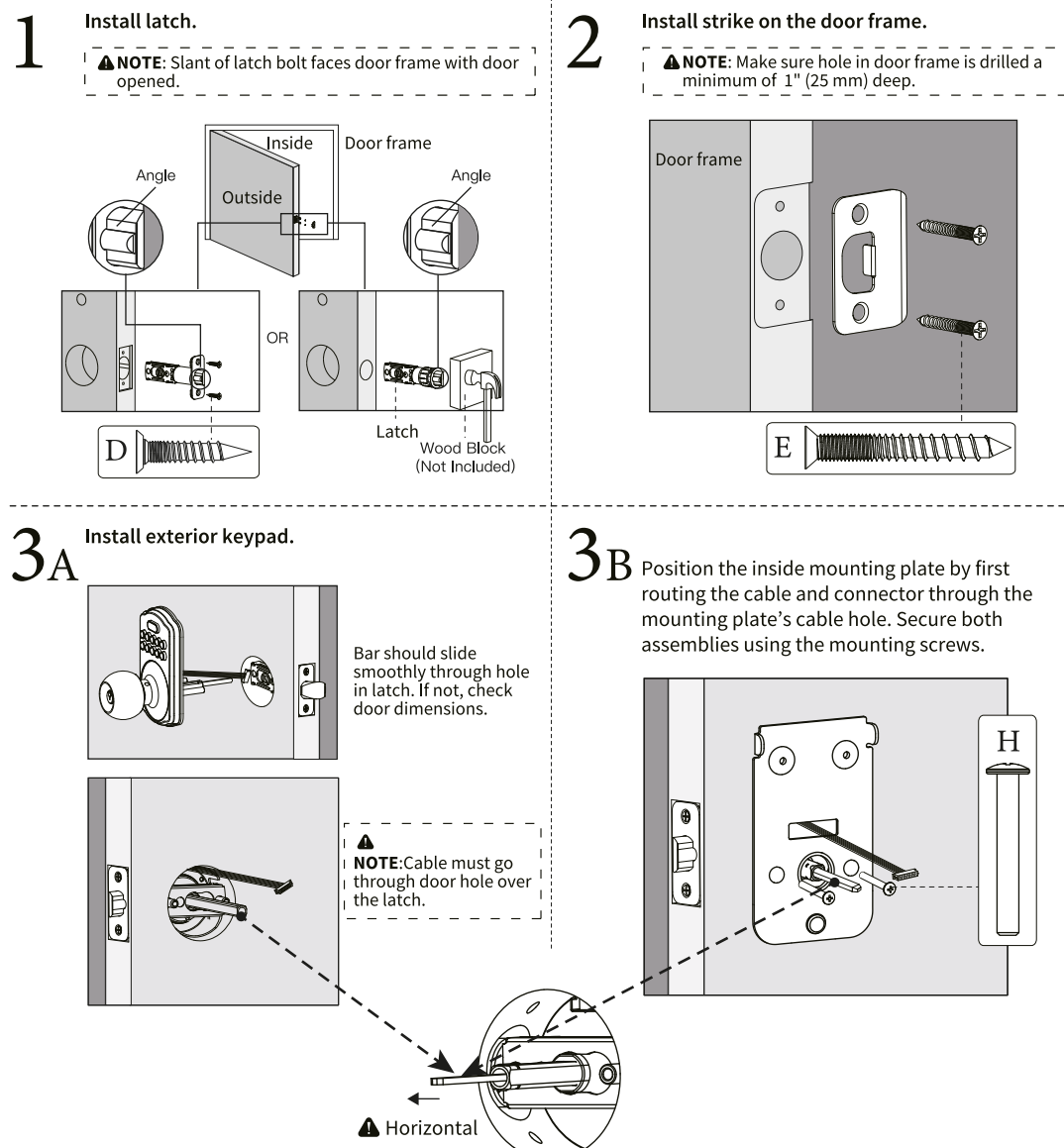
C. Adjust the latchbolt.

NOTE: Measure to confirm that the backset is either 2-3/8" or 2-3/4" (60 or 70 mm). Backset is a distance from door edge to center of hole on door face.

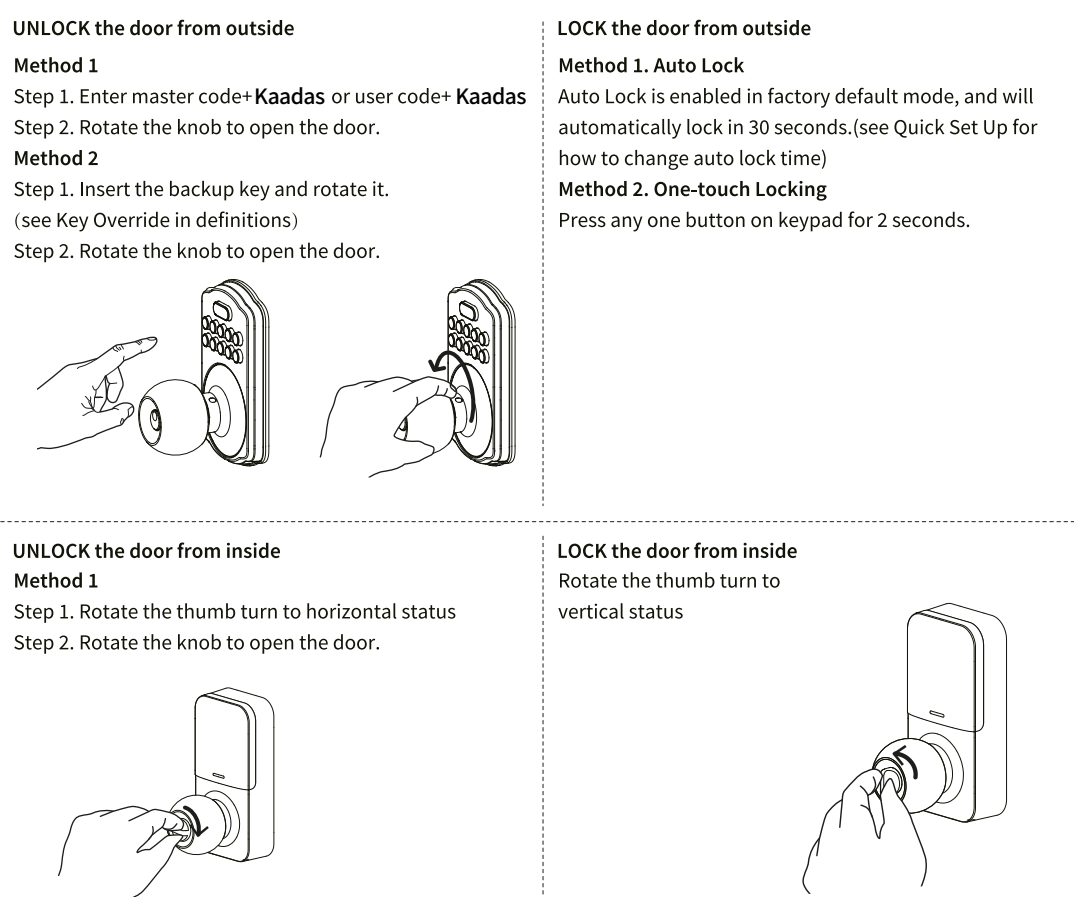
▲ The bolt must be in retracted (unlocked) position when you are changing backset.



Installation



How to Use



Safety Warnings

- Protect your User Codes and Master Code.
- Restrict access to your lock's interior assembly and routinely check your settings to ensure they have not been altered without your knowledge.
- Proper cleaning and maintenance of your lock ensures it will continue to work as it should.
- Do not apply cleaner or detergent directly to any part of the lock.
- The lock meets IP54 water-resistance. It can withstand water splashes ; however, it is not waterproof.
- Do not let water and liquids get into the lock.
- Avoid exposure to direct sunlight. Long-term exposure to direct sunlight may damage the lock.
- The temperature range of is between -4°F to 131°F.

Parts Illustrations

Item	Specifications	Remarks
Battery (Use new, non-rechargeable Alkaline batteries only.)	AA alkaline battery x4 (Operation voltage: 4.6~5.0V)	Last up to one year (10 times open/ close per day)

Definition

- A. Master code**
 - The master code is used for programming and for feature setting. It will also unlock the lock.
 - The default master code is 12345678.
 - This code must be changed prior to programming the lock.
- B. Code Format**
 - Code is 4-10 digits.
 - Both master code and user code do not support the following sequence.
 - Forward number sequence
1 2 3 4 5 6 7 8 9 ✗
 - Backward number sequence
9 8 7 6 5 4 3 2 1 ✗
 - Repeat number sequence
2 2 2 2 2 2 2 ✗
 - Contain existing code sequence
If 5 6 8 3 ✓
Then 5 6 8 3 9 1 ✗
and 9 1 5 6 8 3 ✗
- C. Wrong entry**

After 10 unsuccessful attempts at entering a valid PIN code, the unit will shut down for 3 minute
- D. Unlock with fake code**

User can prevent PIN code exposure from strangers by entering random digits before or after PIN code.

83618 137192 14710
password
Random digits
- E. Battery indicator**

If you hear 10 beeps corresponding with 10 red flashes after pressing any key or lock and unlock the door, that's an indication that batteries. All settings are retained in the memory when the batteries are removed and repalce.
- F. Key override**

Key override can be used to gain access when the batteries are completely dead or when no valid user code is known. Please keep at least one copy of the backup key in secure location of your place.

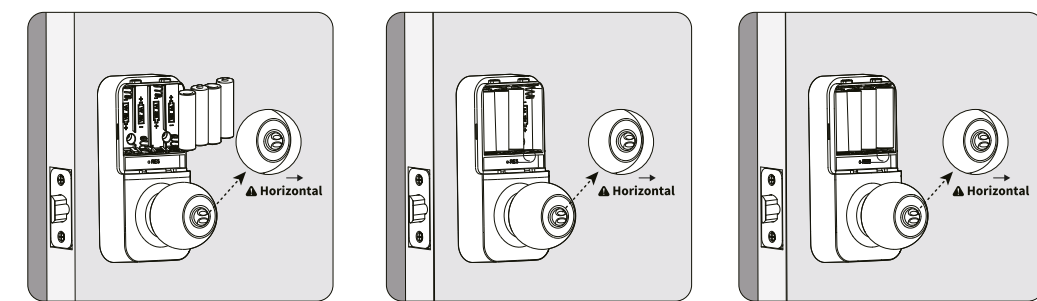
To unlock:
1. Insert the key into the cylinder
2. Rotate the key 90° counterclockwise to unlock.
3. Rotate the key 90° back to remove the key.

To lock:
1. Insert the key into the cylinder
2. Rotate the key 90° clockwise to unlock.
3. Rotate the key 90° back to remove the key.

Restore to Factory Default

- The result after programming this procedure:**
- Delete all user codes and settings associated with the lock.
 - If auto lock feature was enabled before, the auto lock still functions and auto lock delay time will not change.
 - If auto lock feature was disabled before, the auto lock will be enabled and the auto lock time is 30 seconds.

- A** While the door is OPENED, load 3 AA batteries into the battery compartment.
- B** Press and hold the Reset button. Do not release the reset button until you complete the next step.
- C** Place the 4th battery and keep holding the reset button, until you hear beeps sound.



Quick Set up

- ▲ IMPORTANT**
- Each programming steps needs to be completed within 5 seconds
 - If you are hear 5 rapid beeps that indicates entry error or time-out. Please start over
- ▲ Change master code**
- The default master code is 12345678. It is required that you change it to a code of your own before programming.
- Kaadas → Kaadas → Master code → Kaadas → 1 → New master code → Kaadas → Enter the New code again → Kaadas
- B. Add user code**
- Up to 20 user codes can be stored
- Kaadas → Kaadas → Master code → Kaadas → 2 → New user code → Kaadas → Enter the New user code again → Kaadas
- C. Delete user code**
- Kaadas → Kaadas → Master code → Kaadas → 3 → Unwanted user code → Kaadas
- D. Enable silent mode**
- The beep sounds when pressing keypad can be muted. But you will still hear low battery and system alerts.
- Kaadas → Kaadas → Master code → Kaadas → 4 → 2 → Kaadas
- E. Disable silent mode**
- Kaadas → Kaadas → Master code → Kaadas → 4 → 1 → Kaadas
- F. Enable auto lock**
- Automatically locks the deadbolt 30 seconds after unlocking. This feature is on by default.
- Kaadas → Kaadas → Master code → Kaadas → 5 → 1 → Kaadas
- G. Disable auto lock**
- Kaadas → Kaadas → Master code → Kaadas → 5 → 2 → Kaadas
- H. Set auto lock time delay**
- You can set the auto lock time delay between 10 and 99 seconds.
- Kaadas → Kaadas → Master code → Kaadas → 6 → Enter new duration time (10-99) → Kaadas
- I. Add one-time code**
- This code can only be used once and is automatically deleted when used.
- Kaadas → Kaadas → Master code → Kaadas → 7 → New user code → Kaadas → Enter the New user code again → Kaadas
- J. Vacation mode**
- This is a security feature for you when you are leaving your home for vacation or long trip. Enabling vacation mode will restrict all user codes until master code is entered on keypad. If the lock is unlocked by thumb turn, the lock will sound an alarm.
- Kaadas → Kaadas → Master code → Kaadas → 8 → Kaadas

V1.0

正面

反面