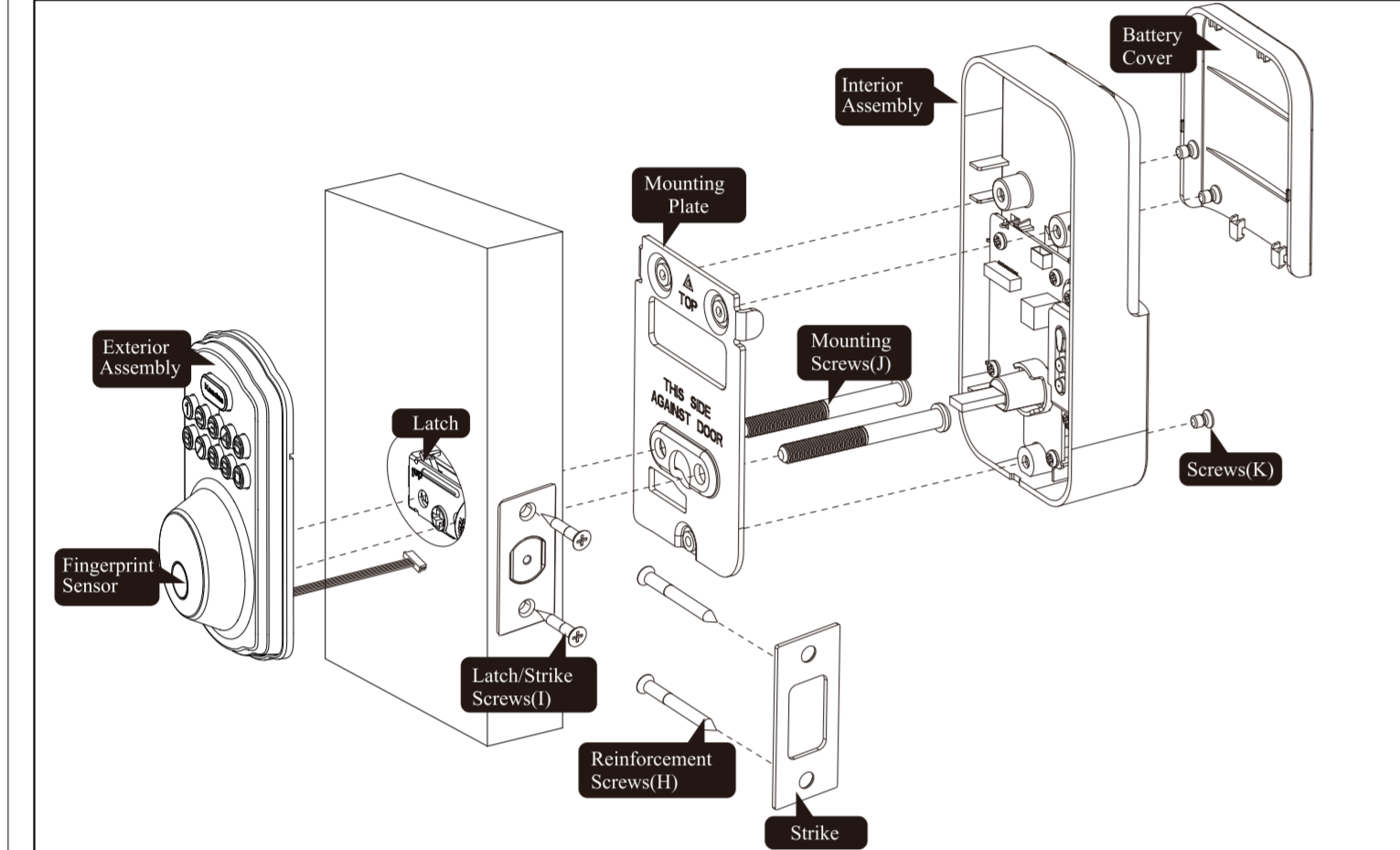


**Kaadas**  
Access to your Future!

**KS02 Series  
User Manual**

www.kaadasgroup.com  
Shenzhen Kaadas Intelligent Technology Co., Ltd. reserves all rights for the final interpretation to this user manual.  
All design and specifications are subject to change without notice.

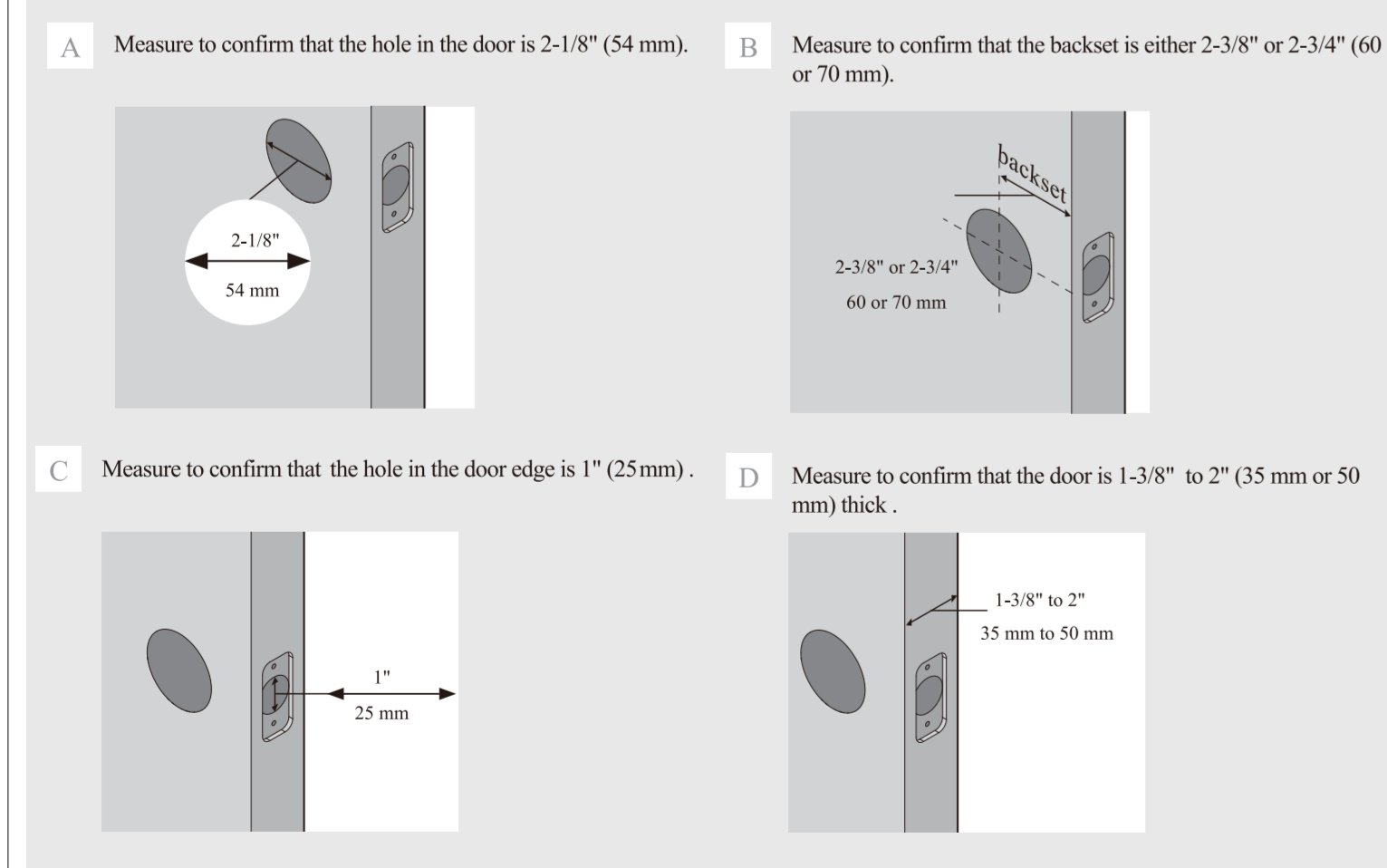
**Installation Guide**



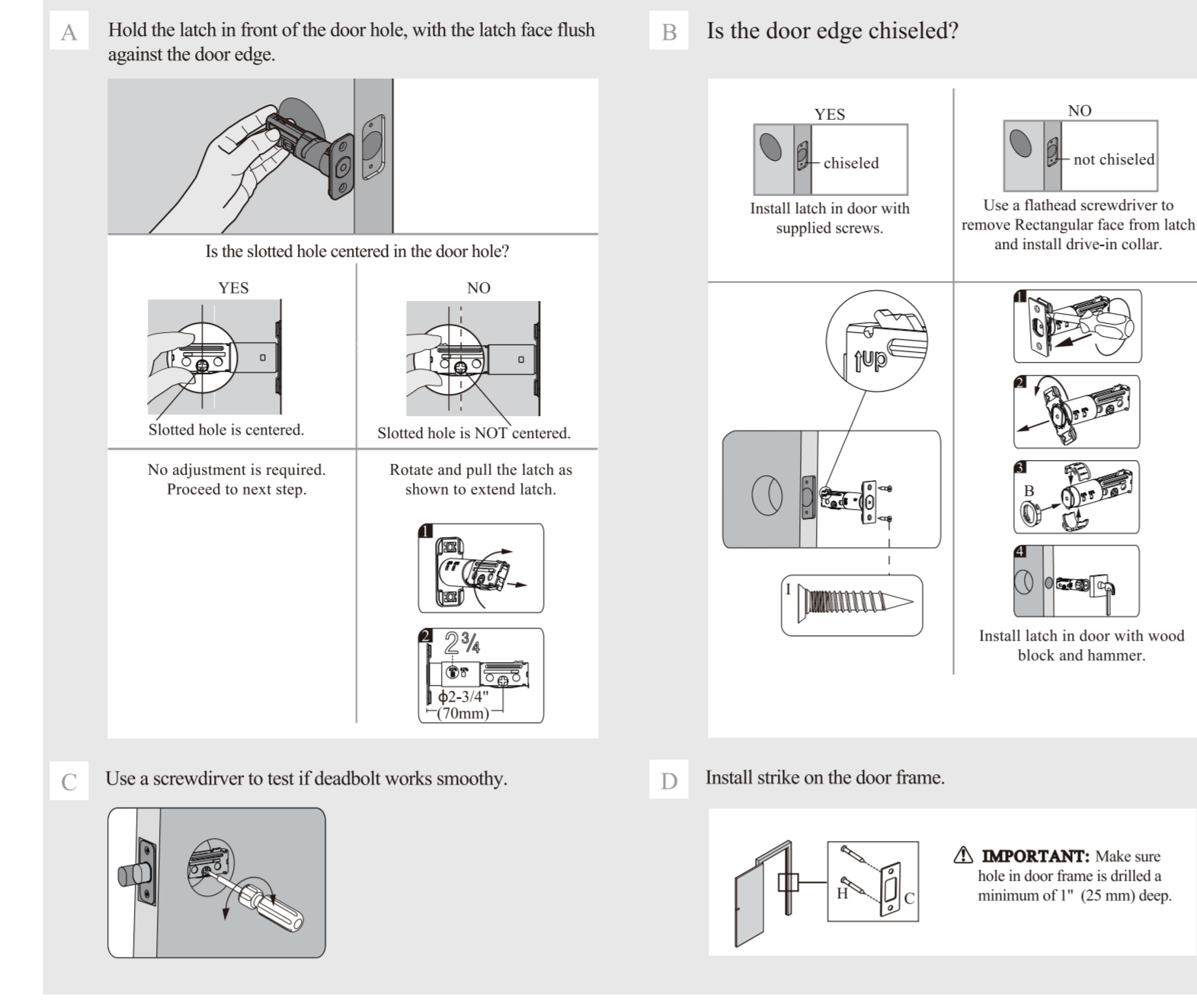
**Parts List**

Latch 	Drive-In Collar 	Strike 	Exterior Assembly 
Mounting Plate 	Interior Assembly 	Battery Cover 	Latch and Strike Screws 
Interior Assembly Screws 	Mounting Plate Screws 		

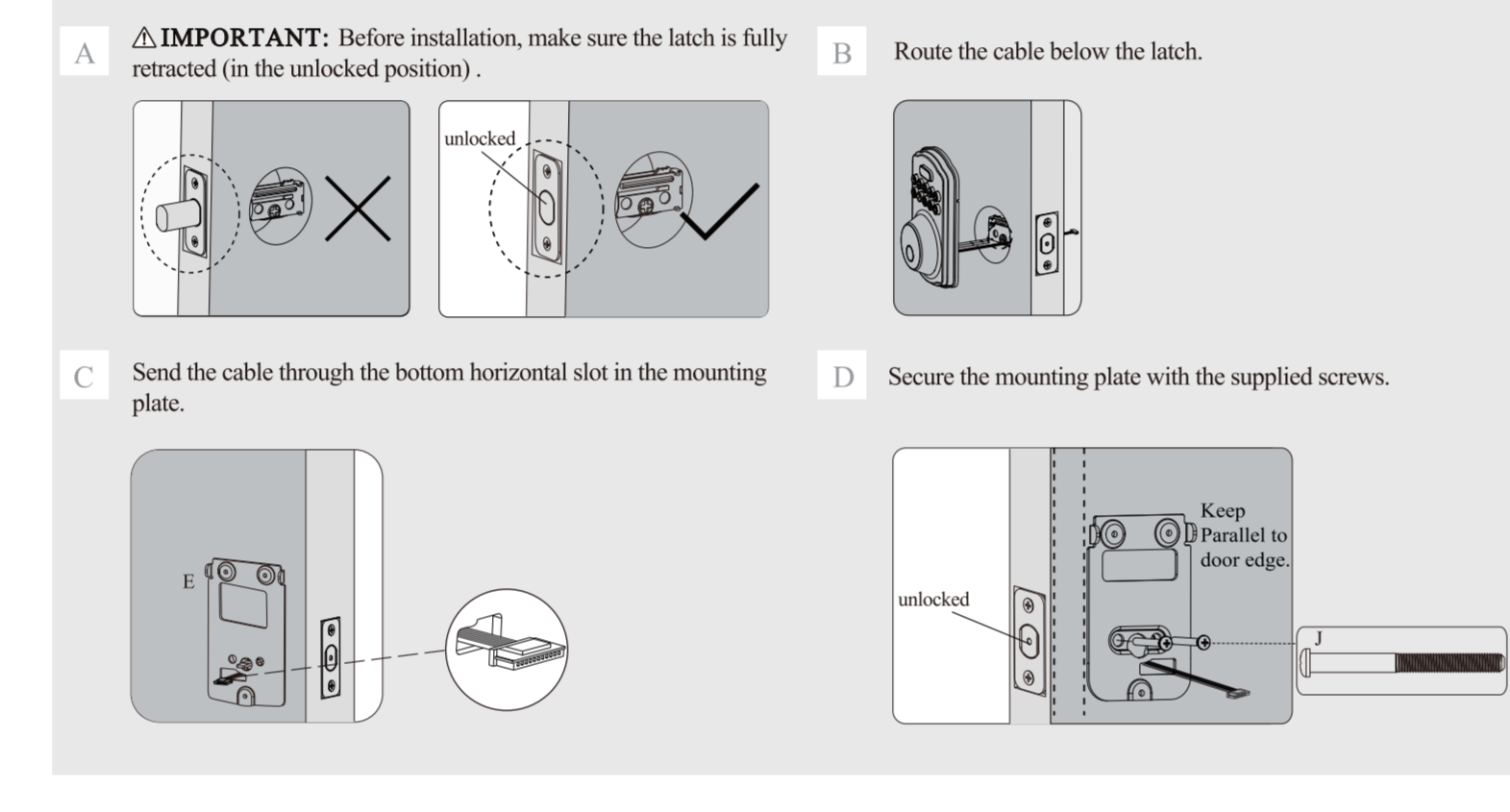
**1 Prepare the door and check dimensions**



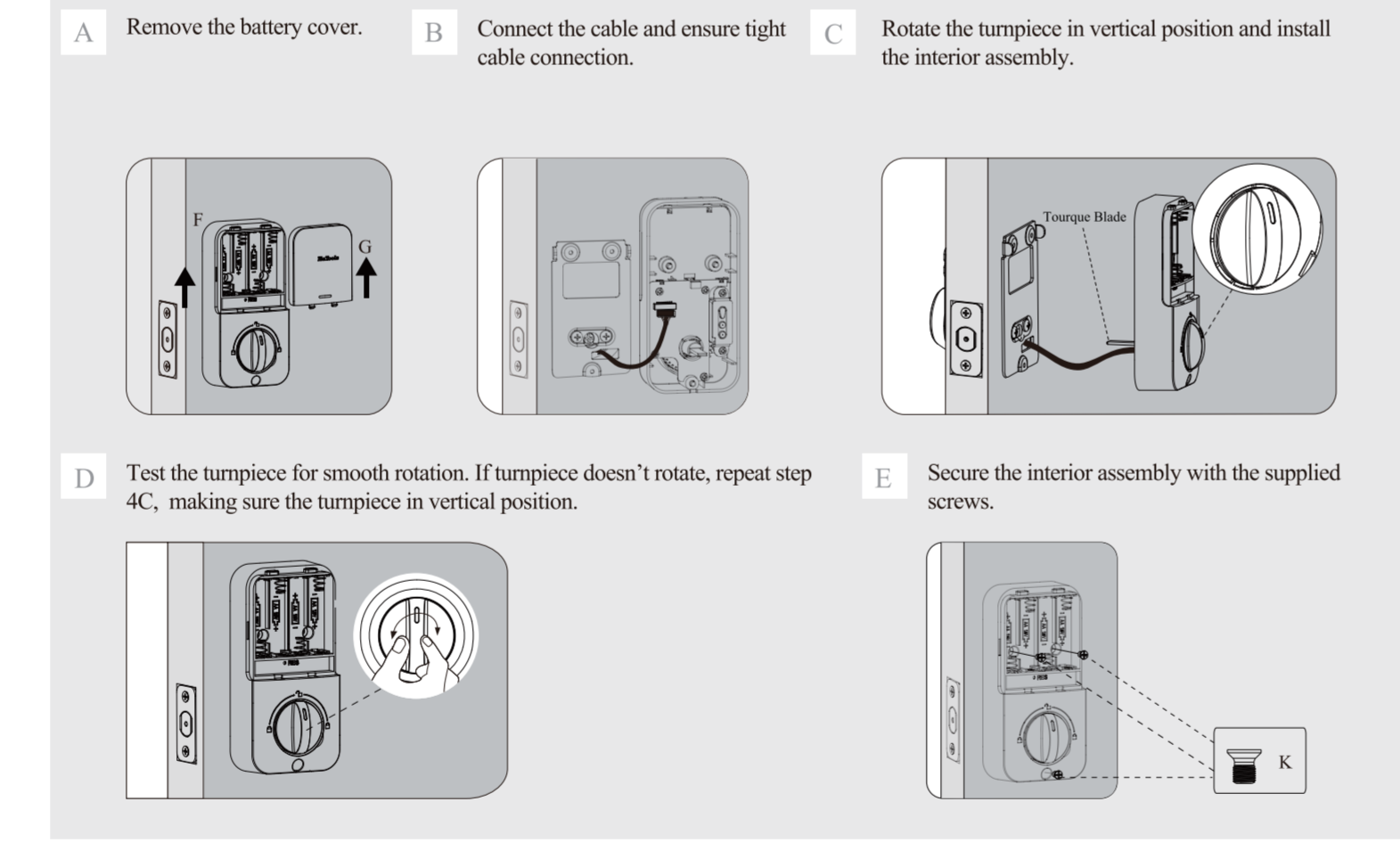
**2 Install the latch and strike**



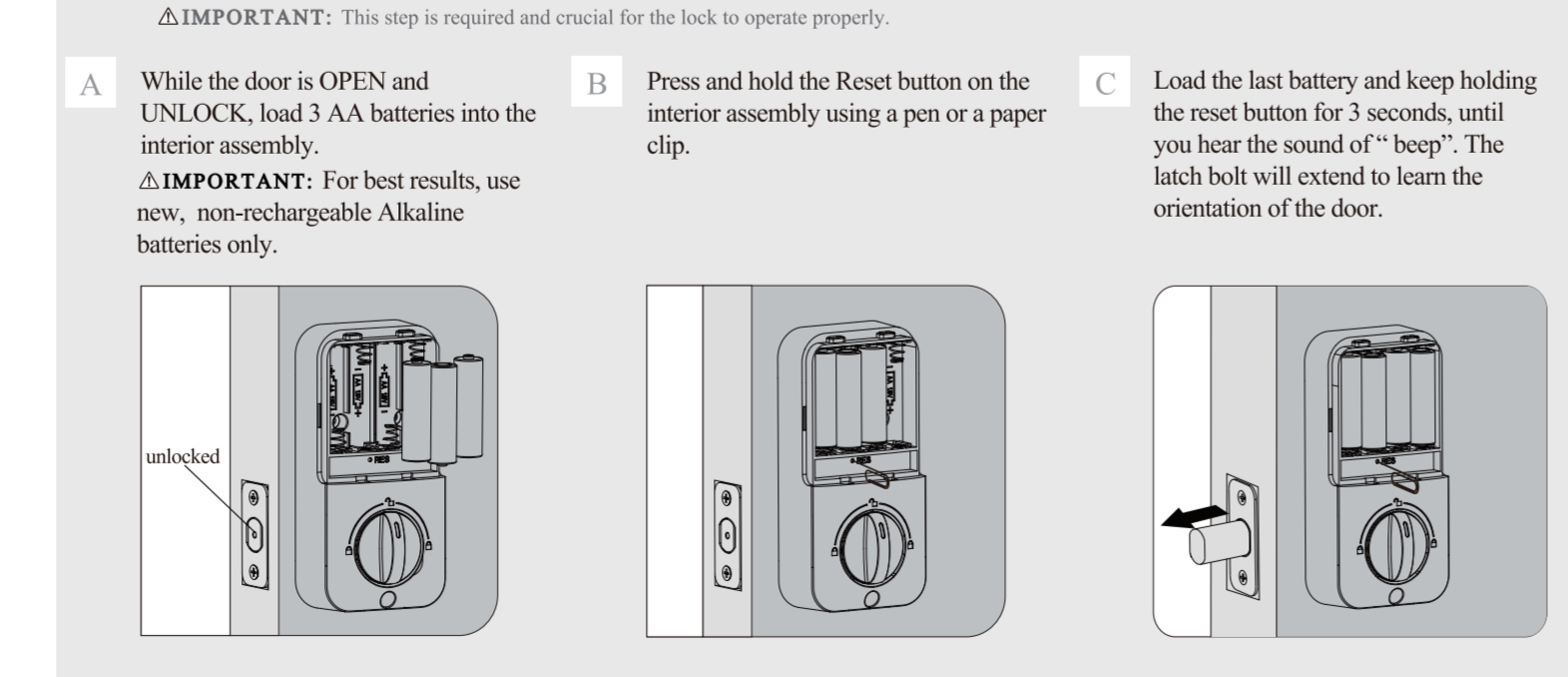
**3 Install exterior assembly**



**4 Install interior assembly**



**5 Detect left/right hand door installation**



**Programming Instructions**

**Information & Safety Warnings**

- Protect your User Codes and Master Code.
- Restrict access to your lock's interior assembly and routinely check your settings to ensure they have not been altered without your knowledge.
- This lockset is designed to provide the highest standard of product quality and performance. Care should be taken to ensure a long-lasting finish. When cleaning is required use a soft, damp cloth. Using lacquer thinner, caustic soaps, abrasive cleaners or polishes could damage the coating and result in tarnishing.

**IMPORTANT: Do not load batteries until lock is completely installed.**

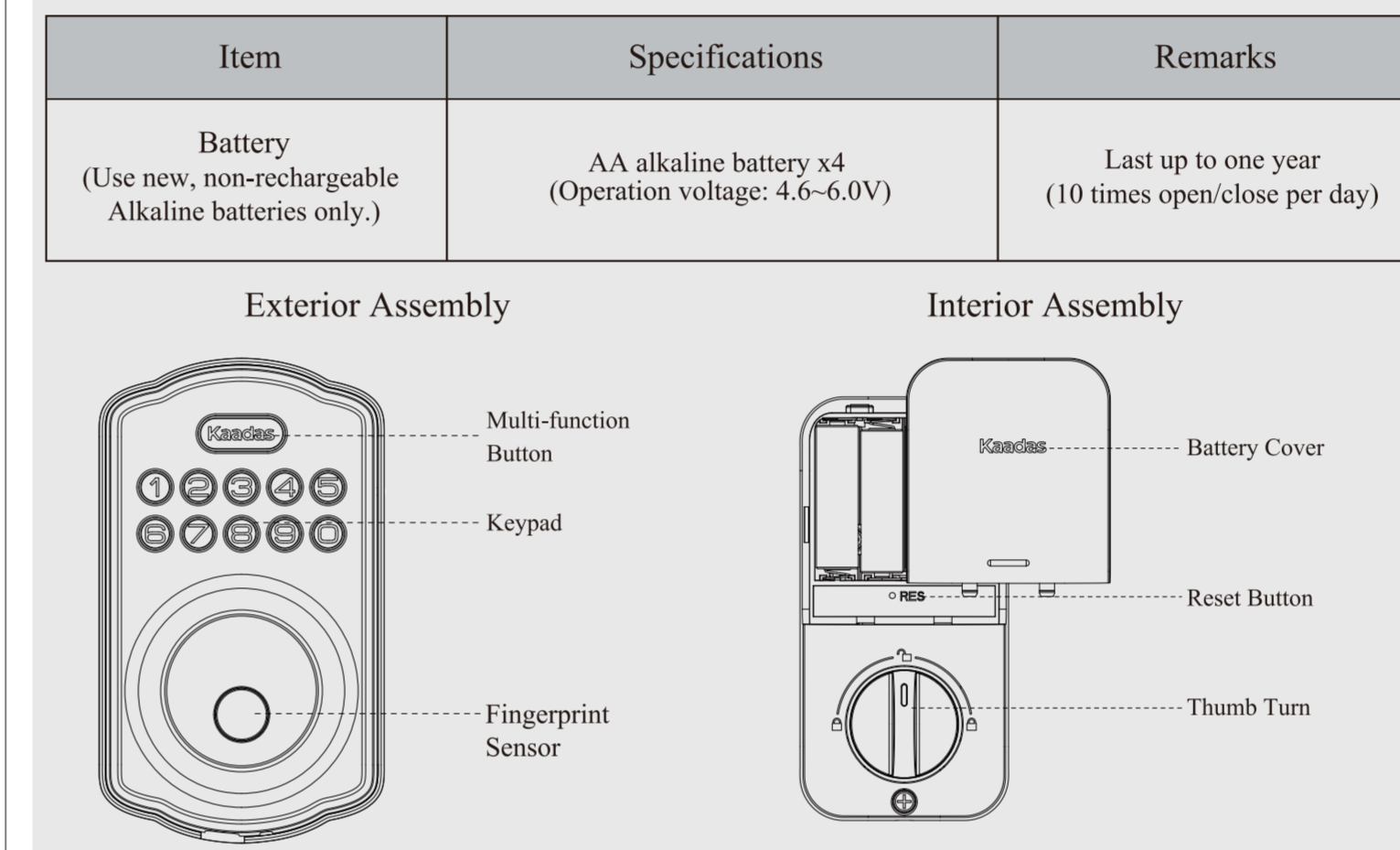
- Master Code(4 to 10 digits) : The default Master Code is 12345678. It is required that you change it to a code of your own before programming.
- User Code(4 to 10 digits) : A total of 20 User Codes (and one temporary one-time User Code) may be programmed.
- Both master and user pin codes do not support the following combination of numbers.
 

A.	1	2	3	4	5	6	7	8	9	✗	Forward number sequence
B.	9	8	7	6	5	4	3	2	1	✗	Backward number sequence
C.	2	2	2	2	2	2	2	2	2	✗	Repeat number sequence

 Then  

5	6	8	3	1	✗	Contain existing code sequence
0	1	5	6	8	3	

**Parts Illustrations**



**IMPORTANT:** The default Master Code is 12345678. It is required that you change it to a code of your own before programming.

**Definitions**

**Master Code**  
Required for programming and feature settings. Master code can be used to unlock the door under vacation mode. The default master code needs to be changed before programming. Property owner/ manager should keep this information confidential.

**Auto Lock**  
Automatically locks the deadbolt 30 seconds after unlocking. This feature is off by default. You can set the Auto Lock time delay between 10 and 99 seconds.

**Wrong Entry Limit**  
After 10 unsuccessful attempts at entering a valid PIN code, the unit will shut down for 3 minutes.

**Silent Mode**  
The beep sounds when pressing keypad can be muted. But you will still hear low battery and system alerts.

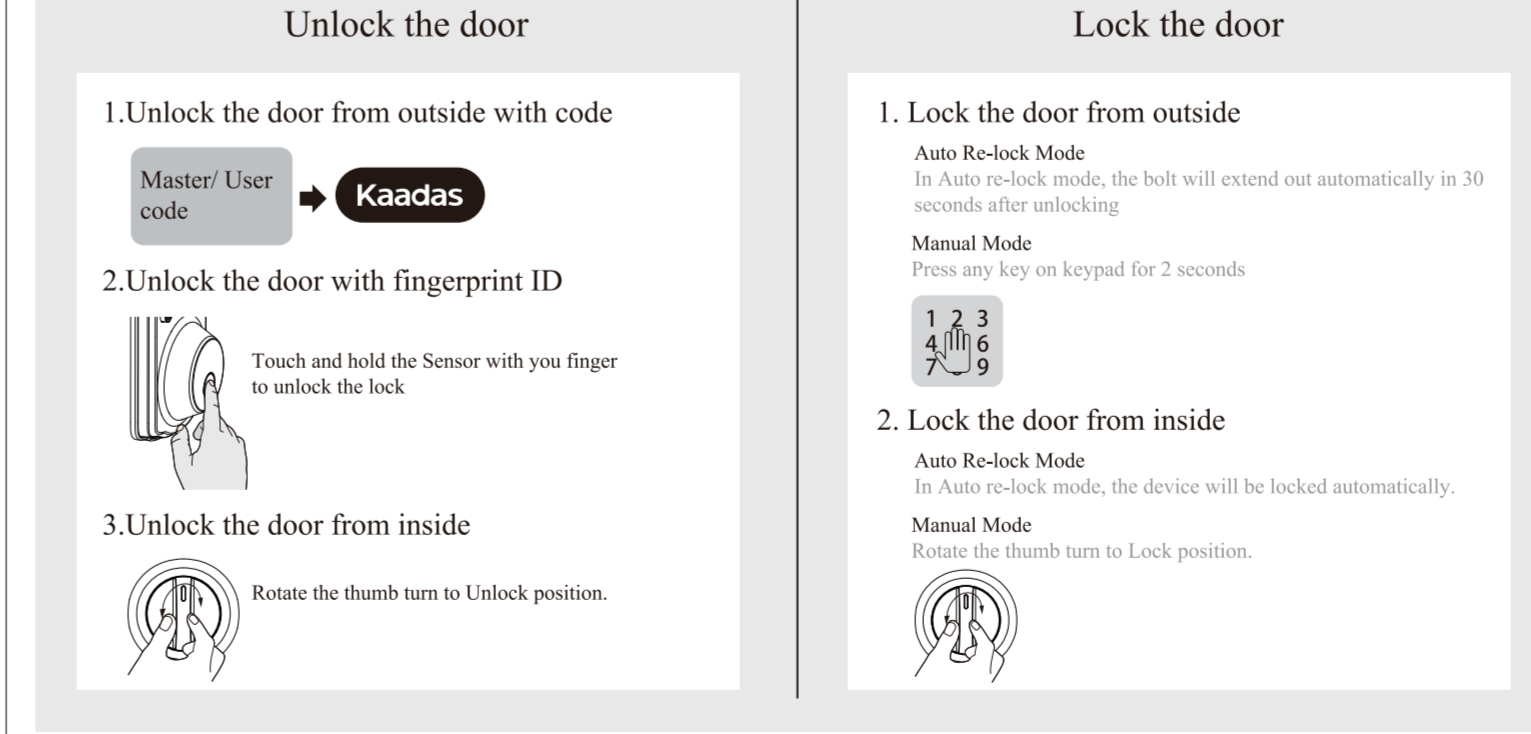
**Vacation Mode**  
This is a security feature for you when you are leaving your home for vacation or long trip. Enabling vacation mode will restrict all user codes until master code is entered on keypad. If the lock is unlocked by thumb turn, the lock will sound an alarm.

**One Time User Code**  
This code can only be used once and is automatically deleted when used.

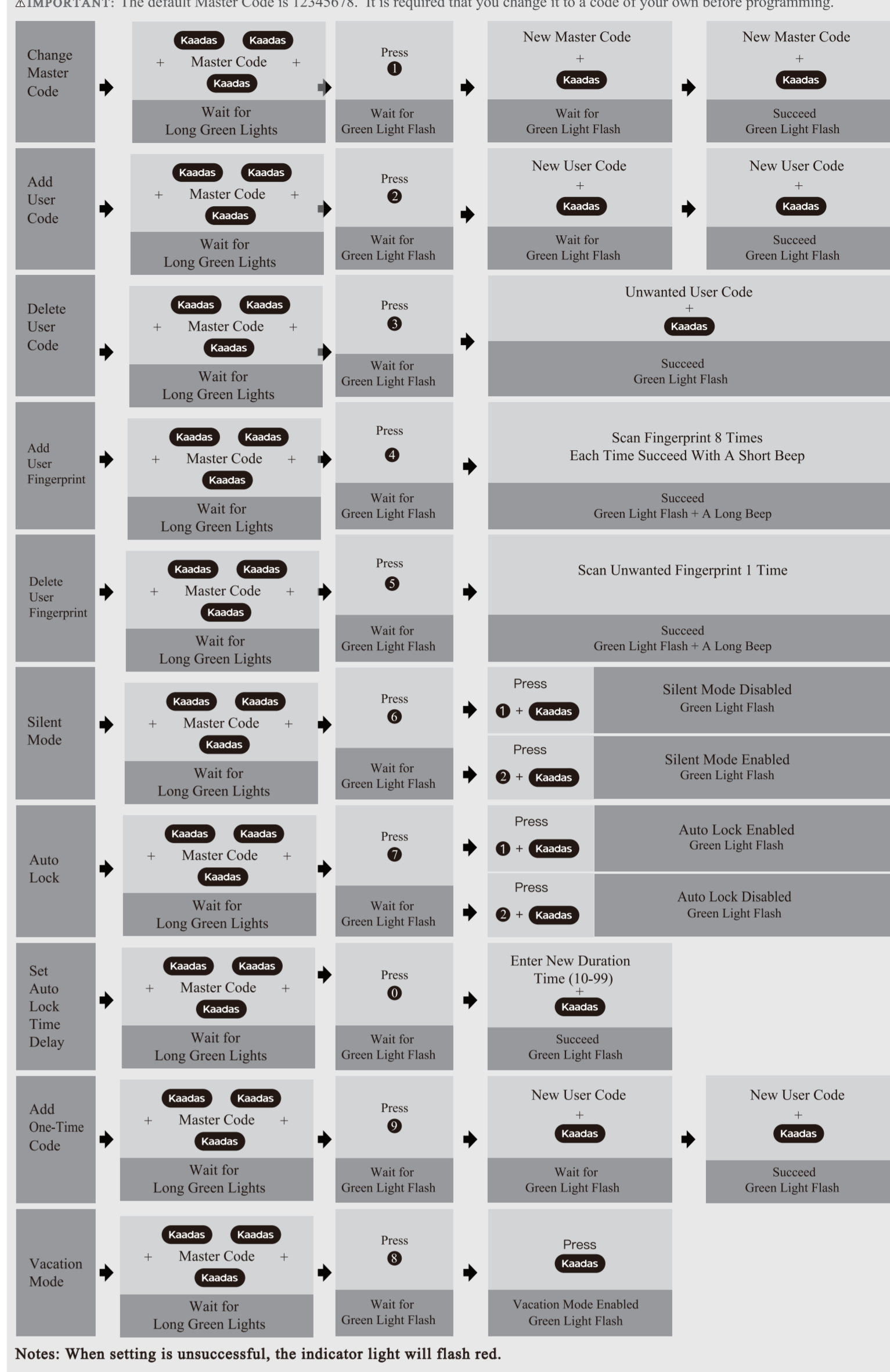
**Unlock with Fake code**  
User can prevent pin code exposure from strangers by entering random digits before or after pin code.

83618 137192 14710  
Random digits

**How To Use**



**Quick Set Up**



**Factory Default Settings**

Settings	Factory Default
Master Code	12345678
Auto Lock	Disabled
Silent Mode	Disabled
Wrong Code Entry Limit	10 times
Shutdown Time	3 mins
Vacation Mode	Disabled

**Restore To Factory Default Settings**

- Keep the door open and unlock.
- Press and hold the Reset button, at the same time take out one battery and then place it back.
- Keep holding the Reset button for 3 seconds, until you hear the sound of beep.

**How to set up fingerprint ID**

- Make sure that the Sensor and your finger are clean and dry;
- Touch and hold the Sensor with your finger until you hear a short beep;
- Lift and rest your finger, making small adjustments to the position of your finger each time;
- The Sensor needs to scan your fingerprint 8 times and stores all the information locally and safely.

**Troubleshooting**

**The turnpiece cannot rotate or operate the lock.**  
Remove and re-install the lock, making sure that the turnpiece is in vertical position.

**The lock cannot be locked or unlocked by the keypad.**  
Make sure that the codes are not disabled. If needed, restore the lock's default settings.

**The keypad doesn't respond when touched (no lights are visible and no beeping is heard).**  
Make sure the cables are properly connected, and make sure the batteries are new and installed correctly.

**After the installation of the batteries, there is no response when you press any button and no beeps are heard.**  
Check the cable connection and the polarity of the batteries. Also make sure the batteries are not dead.

**I forgot my Master Codes.**  
Perform a reset in order to erase all passcodes. Once the reset is complete, all passcodes will be erased and the Master code will return to the default value ( 12345678 ).

\* If none of the above resolves your issue, check out our updated user manual by scanning the code below. You could also contact kaadas customer service at support@kaadasgroup.com.

正面

背面

风琴折, 折后尺寸: 105X148.5mm